



FFAW | UNIFOR
Fish, Food & Allied Workers

Keith Sullivan
President, FFAW-Unifor

AN ABUNDANT OCEAN: GROWTH OPPORTUNITIES FOR FISHERIES, FISH HARVESTERS AND COASTAL COMMUNITIES

OCEANA CANADA'S SCIENCE SYMPOSIUM
Ottawa, ON | October 24, 2022

FISH, FOOD AND ALLIED WORKERS UNION

- Newfoundland & Labrador's largest private sector union, est. 1971
- Represents approximately 10,000 fish harvesters and 3,000 workers in processing plants and dockside monitoring.
- Advocate for economic and social opportunities in coastal communities throughout the province.



FFAW-Fisheries Sector

- Owner-operator fleet = 3,500 small businesses (boats) on the water
- Collective bargaining for fair prices
- Policy and regulatory advocacy
- In-house FFAW-Science department
- Harvest 40+ different species
- Over \$800 million in landed product annually
- Support economic and ecologically sustainable fishing industry & coastal communities throughout the province



Atlantic Mackerel: Changing Distribution & Abundance

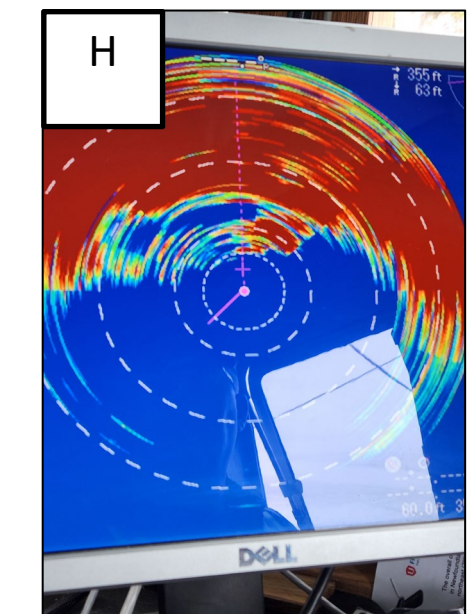
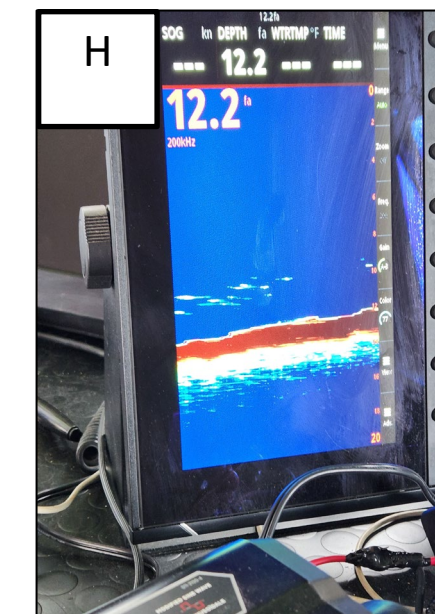
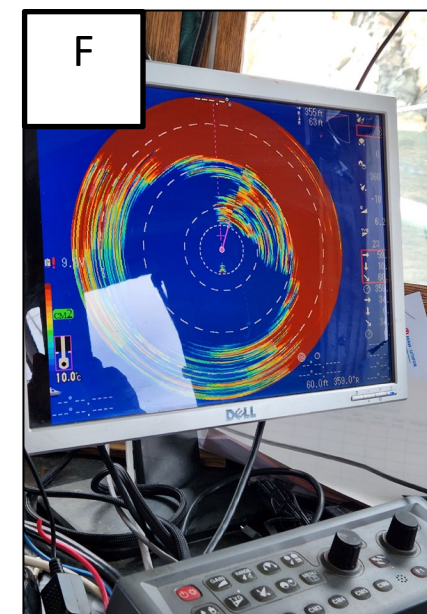
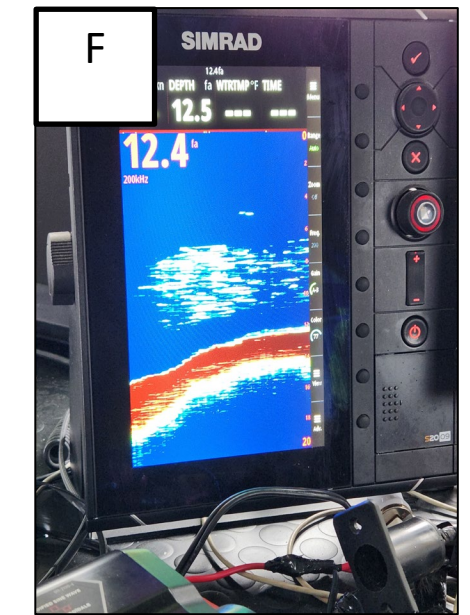
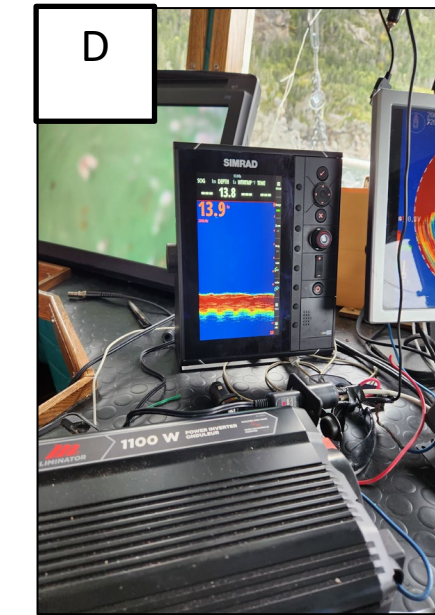
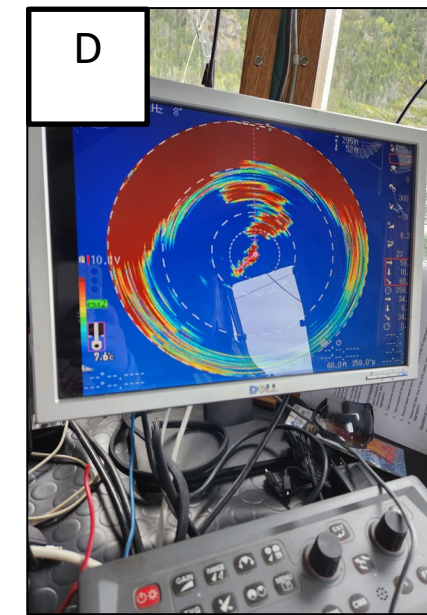
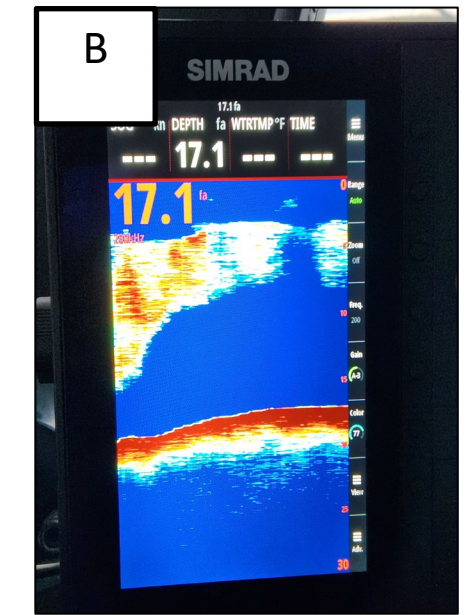
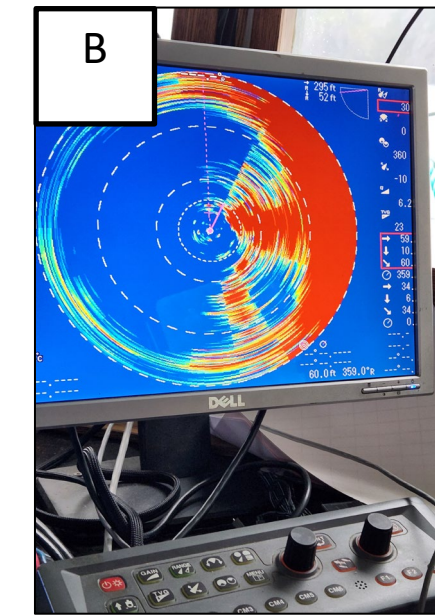
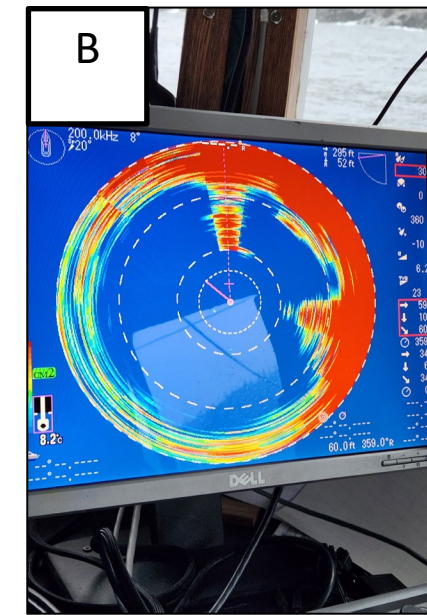
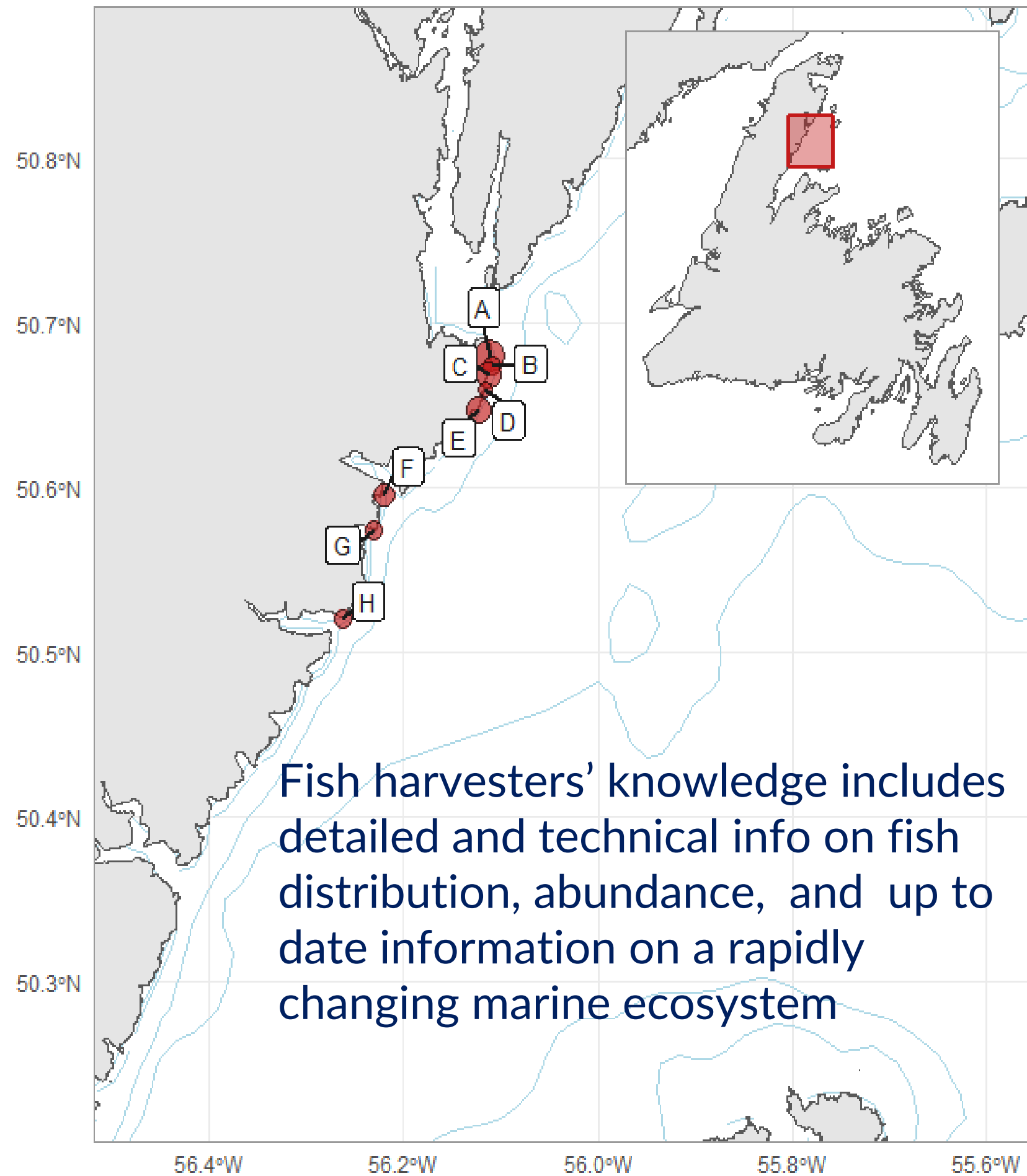
NL harvesters seeing unprecedented abundance of mackerel:

“Never in my life have I heard of mackerel all around the coast of NL and southern Labrador.”

“I have been a fish harvester 40 years, this year has been the best I’ve seen since the 80’s.”

“Every place I've been, there's mackerel! In the coves and out on the front. Mackerel showing on top of the water in the arms and harbors, which is something I haven't seen since I was a kid, 40 years ago.”





Northern Cod: Increased Abundance & Opportunities

- Spawning Stock Biomass estimated at 411,000t (DFO SAR 2022/041)
- Average estimated SSB was 354,000t between 1976-1980, a level from which the stock recovered, despite high-fishing pressure
- There is considerable scope to grow the Northern Cod inshore fishery



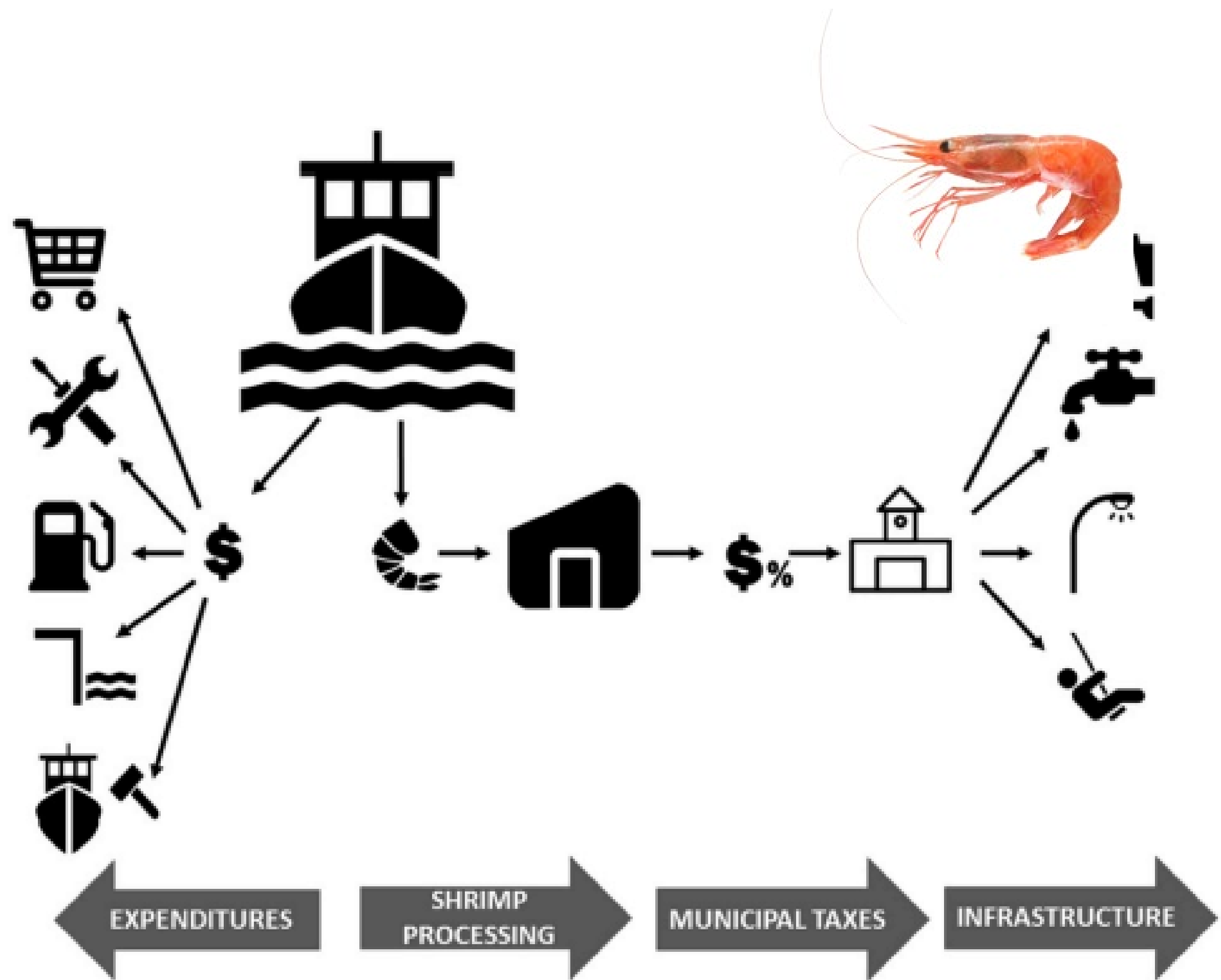
Northern Cod: Increased Abundance & Opportunities

- The first 115,000mt to Indigenous & inshore owner-operators
- Building capacity for an inshore-based northern cod fishery is a critical growth opportunity for NL
- The new northern cod fishery will be a high value and high-quality fishery and an important component of the multispecies owner operator fleet.

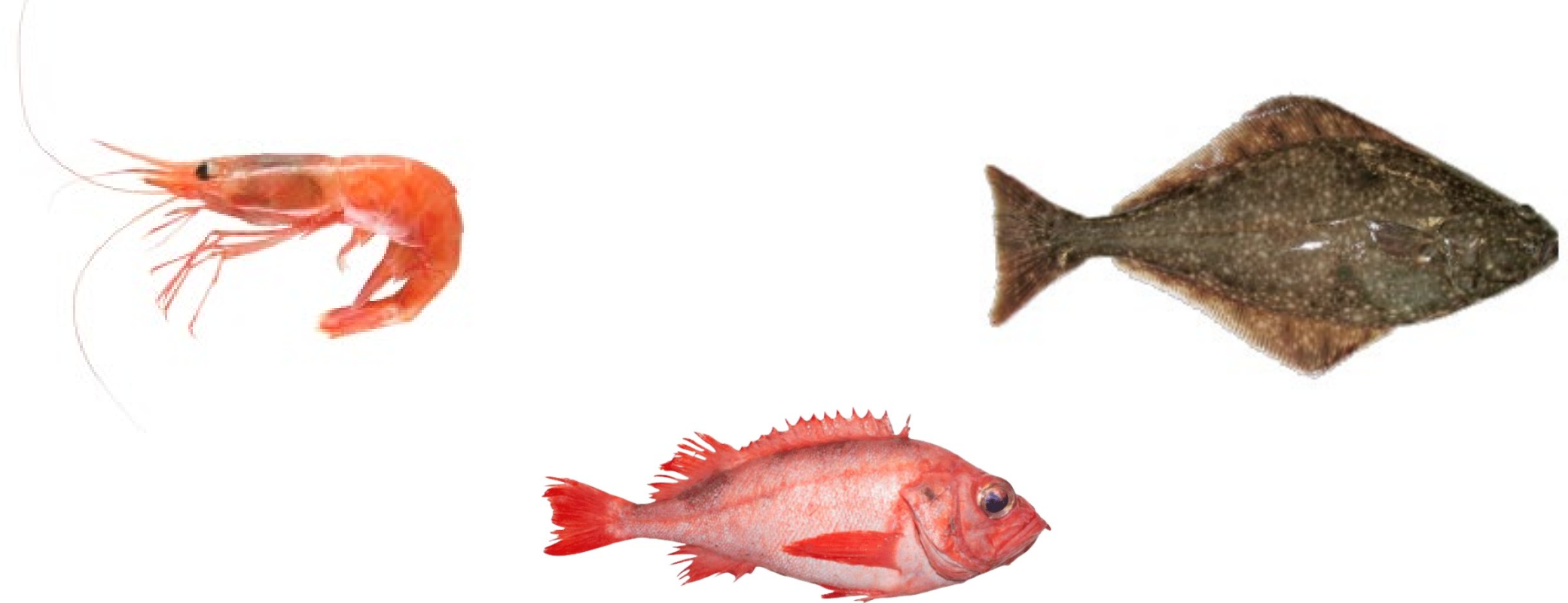


Opportunities for Coastal Communities

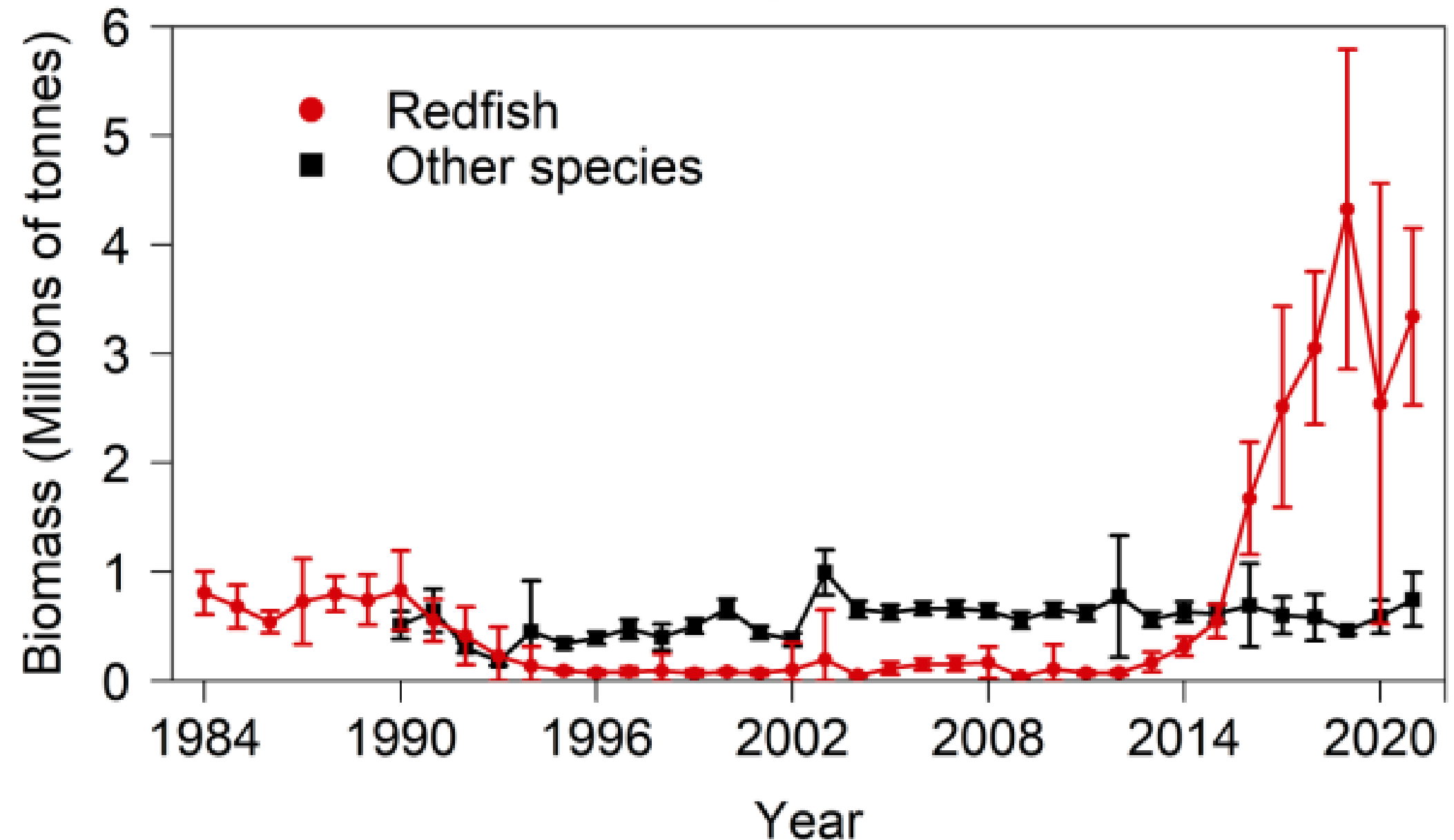
- It is the foundation for coastal sustainability through the many other industries it indirectly supports
- The inshore fishery is critical to supporting direct and indirect jobs, and for funding municipal tax bases
- People want & deserve good jobs with longer seasons
- Coastal fishing communities must be prioritized in the Blue Economy



Growth Opportunities in the Gulf of St. Lawrence

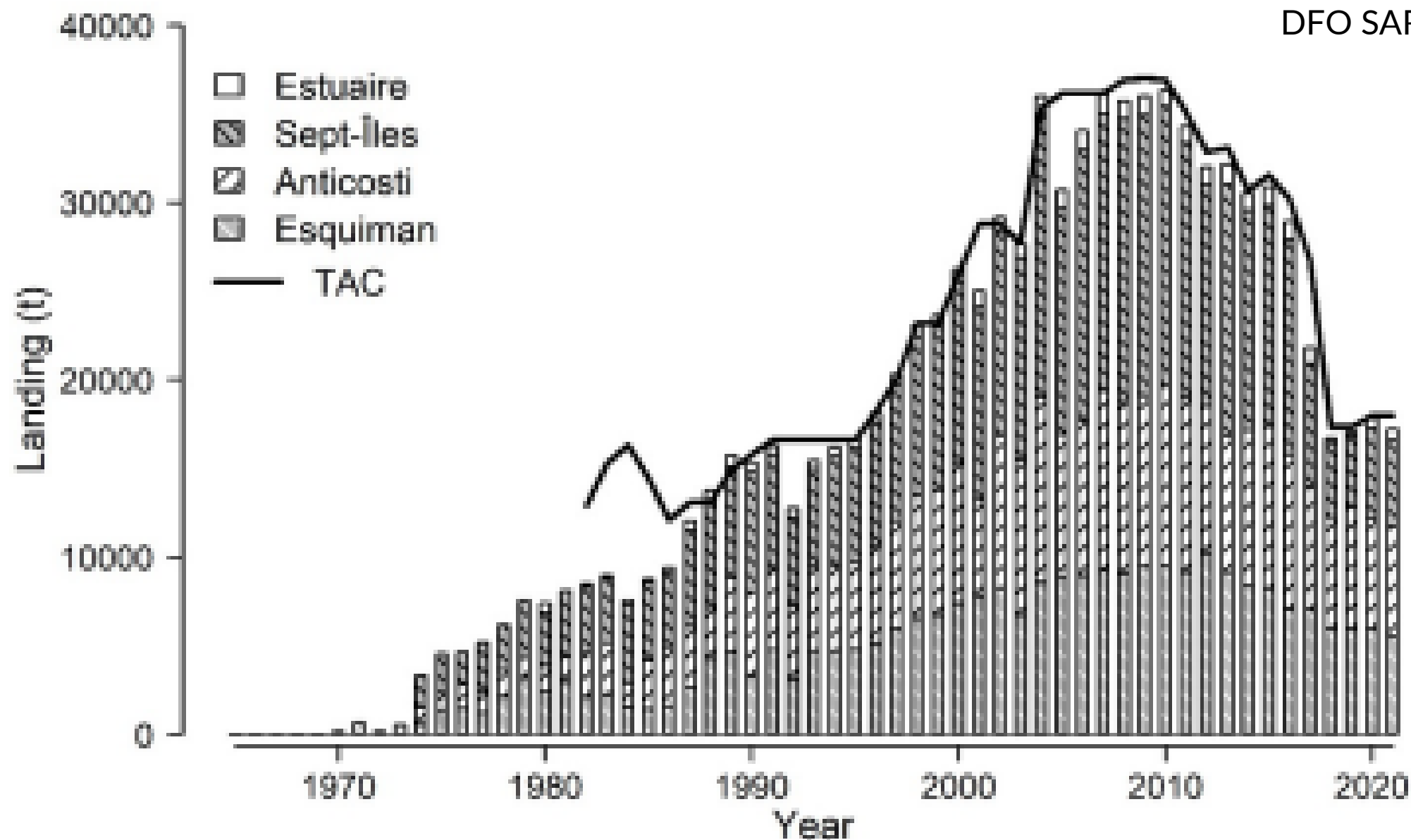


- Region in transition:
(1) phenomenal redfish recruitment,
(2) declining shrimp stocks, and
(3) high-value, sustainable and healthy existing fisheries.
- Our challenge is to develop a sustainable redfish fishery that supports coastal communities for fleets and protect the halibut stock and fisheries in the GSL.
- Consider shrimp harvesters and communities impacted by redfish explosion.



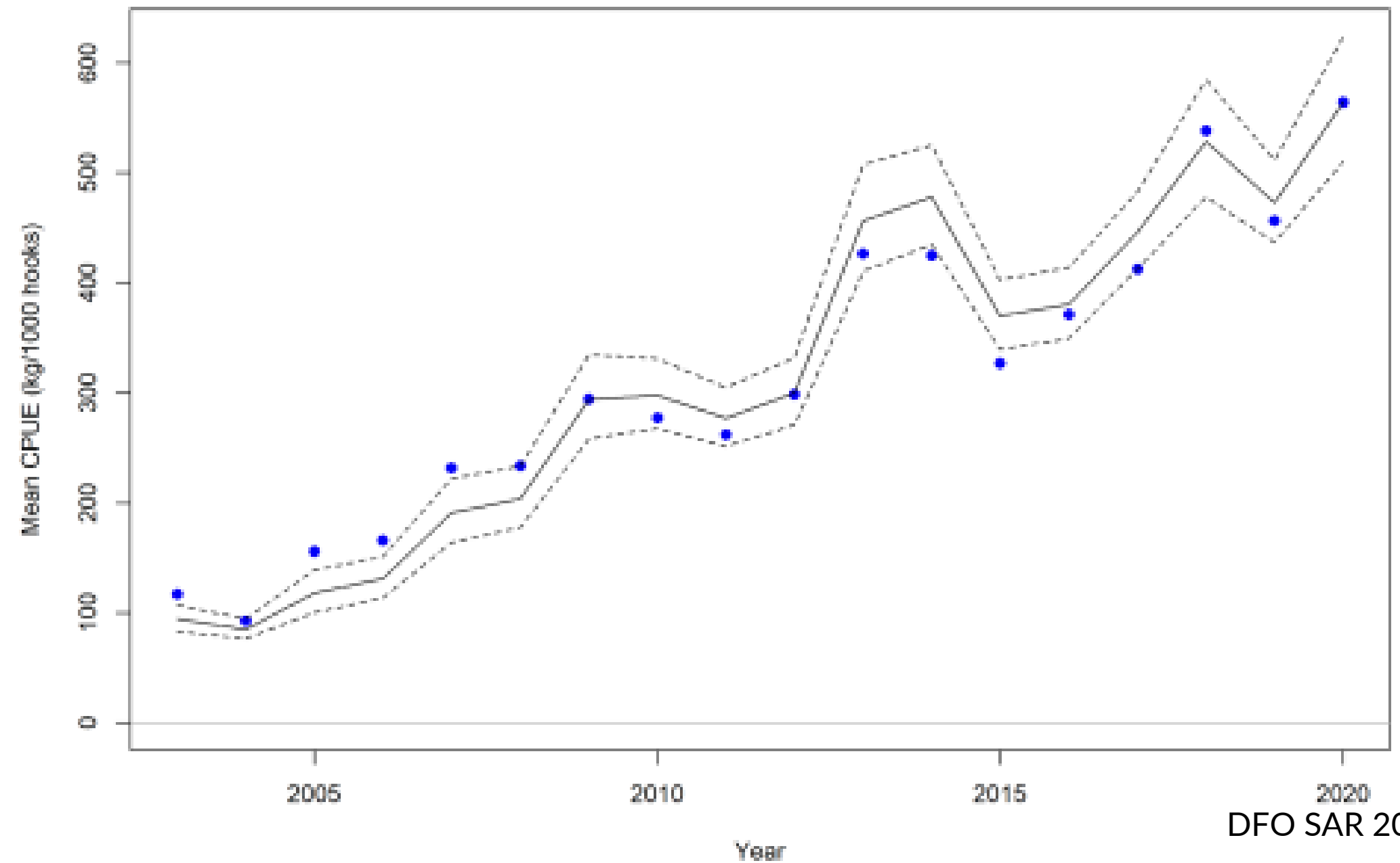
Multi-species ecosystem important to Coastal Communities

- Livelihoods and investment of adjacent shrimp harvesters and communities impacted by redfish.
- Local adjacent inshore owner operator harvesters must have access to fish in their coastal waters.



Multi-species ecosystem important to Coastal Communities

- Must be conscious of sustainable, small boat fishery supporting hundreds of enterprises in NL (GSL)
- Priority to protect other sustainable fisheries like halibut in the development of a new redfish fishery.



DFO SAR 2021/034



An Abundant Ocean: Growth Opportunities for Fisheries, Fish Harvesters and Coastal Communities

- Fish harvesters' knowledge, expertise and participation is needed in fisheries science and management
- Who has access to fish matters – adjacent inshore harvesters and coastal communities.
- The inshore fishery is the foundation for economic and cultural sustainability in NL
- Environmentally sustainable diversification with good jobs. Must be a priority in Blue Economy!

